

# VORTRAN LASER TECHNOLOGY, INC

## VERSALASE™ SYSTEM

The VersaLase™ system is a fully integrated, plug and play, and self-contained multiple wavelength (up to 4) output laser module. The Stradus® laser module patented sealed optical cavity and the innovative electronics give the VersaLase unparalleled power stability, beam pointing stability, and low noise over time and temperature. Vortran's Graphical User Interface (GUI) software allows the user to control and monitor each wavelength remotely via USB or RS-232.

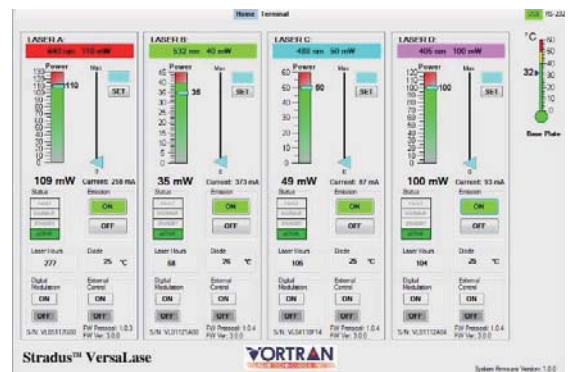


Stradus Wavelengths (nm) <sup>1</sup>	405 through 785nm
Power Output (mW) <sup>2</sup> (-0%, +10%)	Up to 250mW per wavelength
Beam Output <sup>3</sup>	Free Space, SM, PM and MM fiber Options
Beam Diameter (mm, 1/e <sup>2</sup> ) <sup>4</sup>	~0.8-1.3
Beam Divergence (mrad) <sup>4</sup>	<1.0
Beam Spatial Mode	TEM <sub>00</sub>
M <sup>2</sup> (typical)	< 1.25
Beam Circularity	> 90%
Beam Centration (mm)	< 0.5
Beam Alignment (mrad)	< 5
Pointing Stability (μrad/°C)	< 5
Power Stability (over 24 hours)	< 2% from Fiber
Polarization Orientation	Vertical ±2°
Polarization Extinction Ratio	>100:1
RMS Noise (10Hz to 10MHz)	<0.5% for 532nm <0.25% for 514nm <0.15% for 488nm <0.1% for all others
Communication	Mini-USB and RS-232
CDRH Class	Class IIIb
ESD Protection	Class 4
RoHS Compliance	EU and China

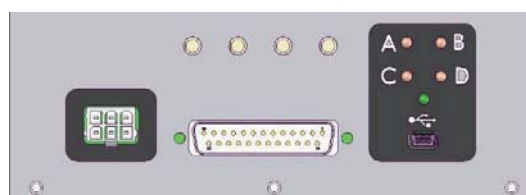
- <sup>1</sup> Maximum power of 250mW at 405nm
- <sup>2</sup> Please specify MM fiber diameter
- <sup>3</sup> Other beam sizes and shapes available
- <sup>4</sup> Free space; elliptical and other shapes available

- **Medical, Biomedical & Industrial**
- **Patented Sealed Optical Cavity**
- **Self-contained & Compact**
- **Excellent Beam Quality**
- **Low Noise**
- **USB or RS-232 Interface with GUI**
- **Single Interface for multiple outputs**
- **OEM Head or End-user Systems**

### Graphical User Interface Software



### VersaLase Backpanel



[www.vortranlaser.com](http://www.vortranlaser.com)  
[sales@vortranlaser.com](mailto:sales@vortranlaser.com)

21 Goldenland Court #200  
Sacramento, CA 95834  
Phone 916.283.8208  
Fax 916.648.9751

