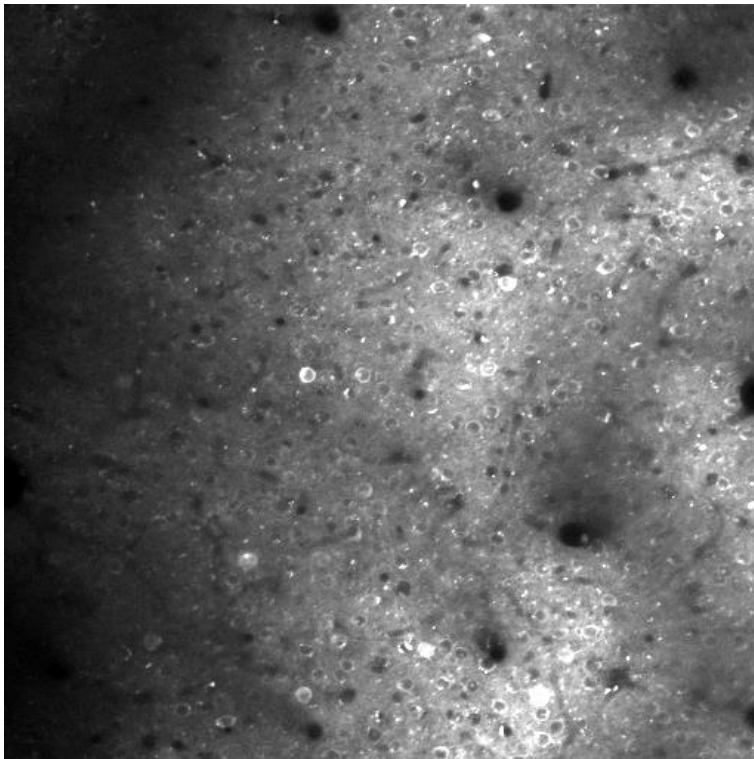


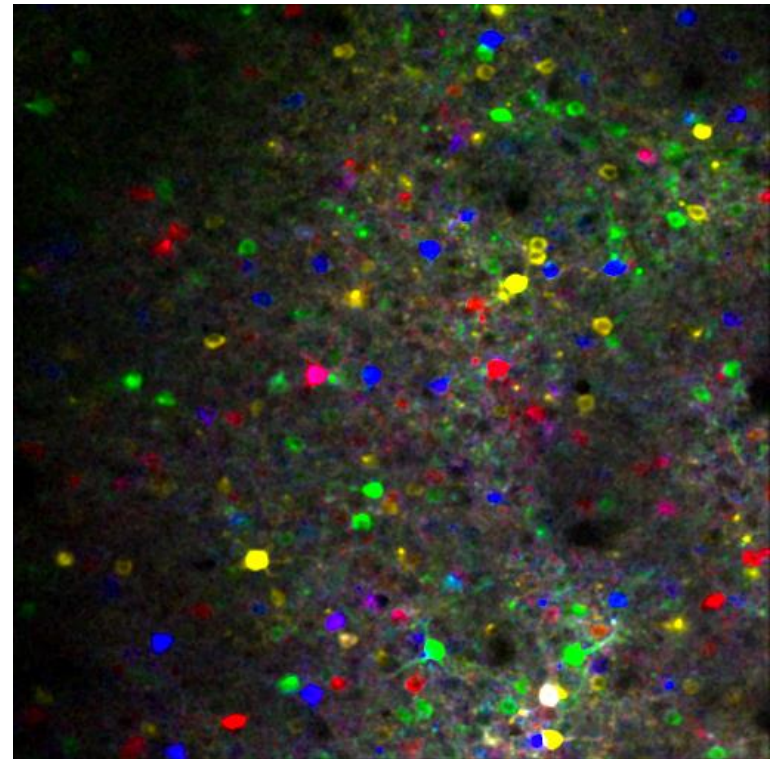
Visual responses of V1 layer 2/3 (150 μm) neurons
in Thy1-GCaMP6s mouse

A Ti:Sapphire oscillator 920nm, HV: 80, power: 8%

FOV (average)



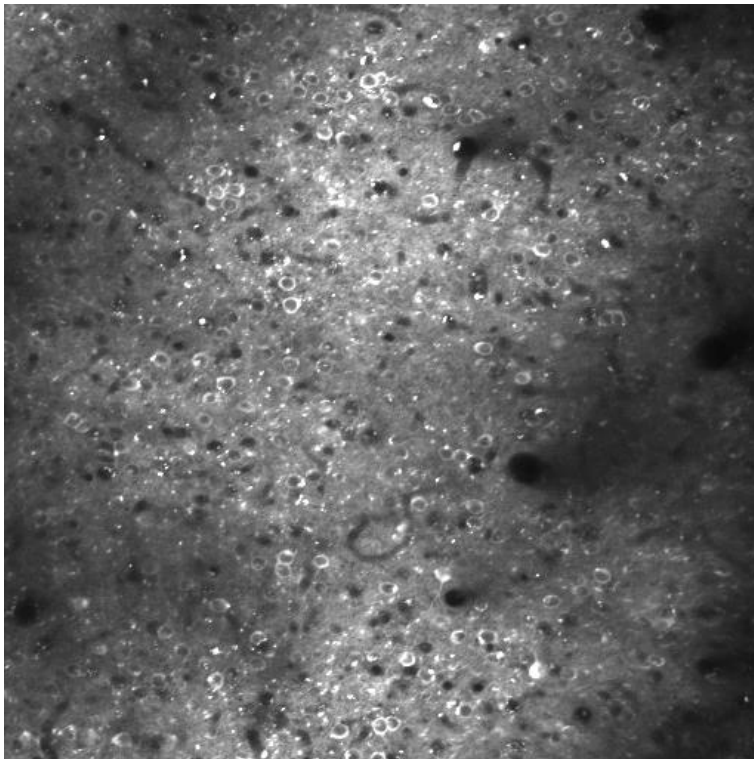
Orientation map



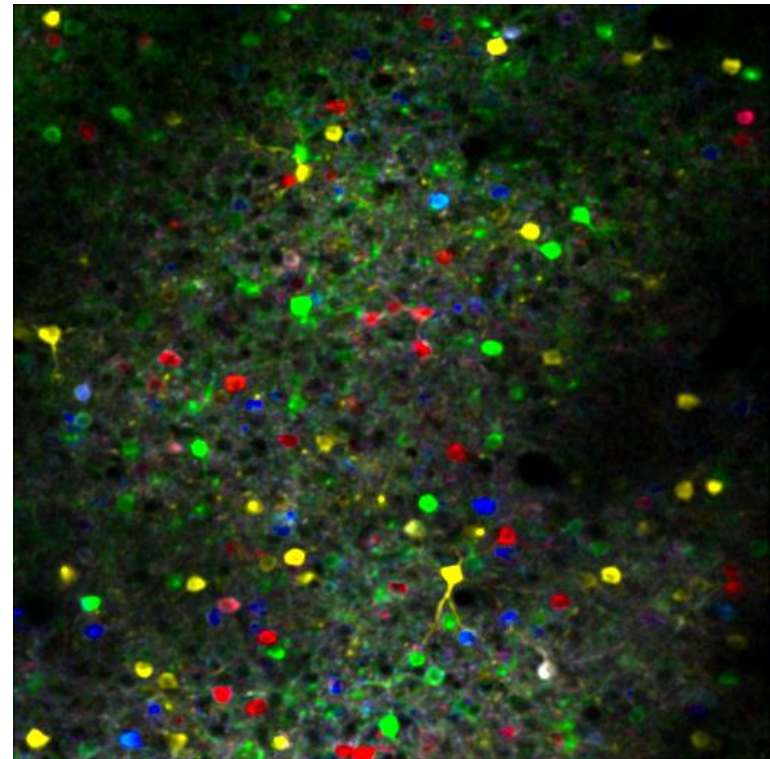
Visual responses of V1 layer 2/3 (150 μm) neurons in Thy1-GCaMP6s mouse

Alcor 920nm, HV: 80, power: 6%

FOV (average)



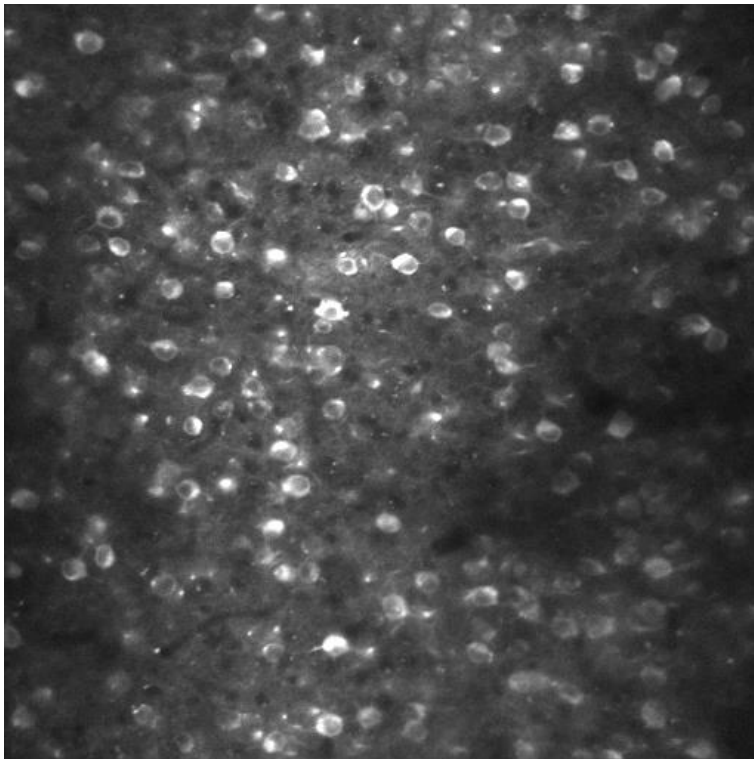
Orientation map



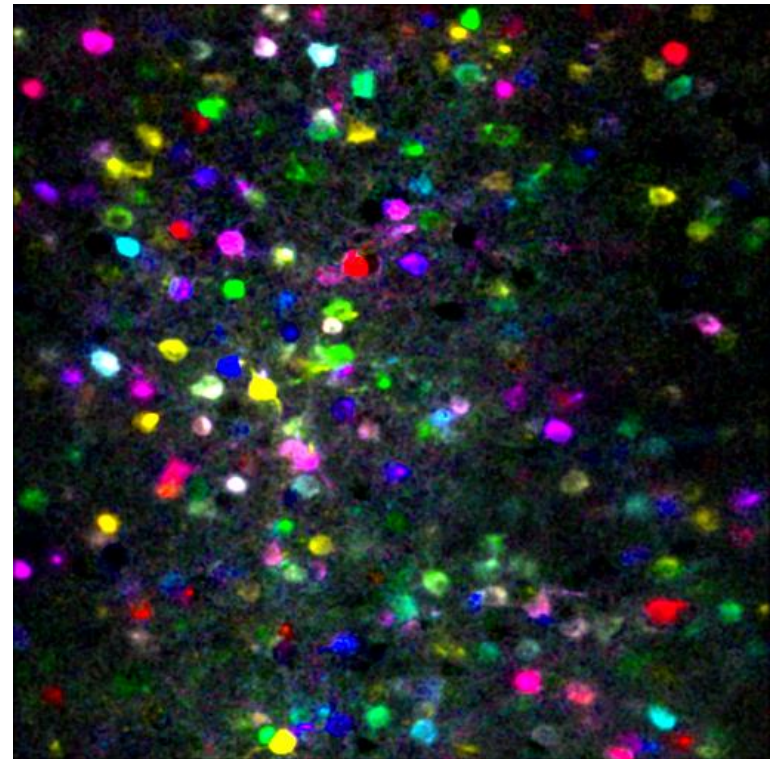
Visual responses of V1 layer 5 (500 μm) neurons in Thy1-GCaMP6s mouse

Alcor 920nm, HV: 80, power: 10%

FOV (average)



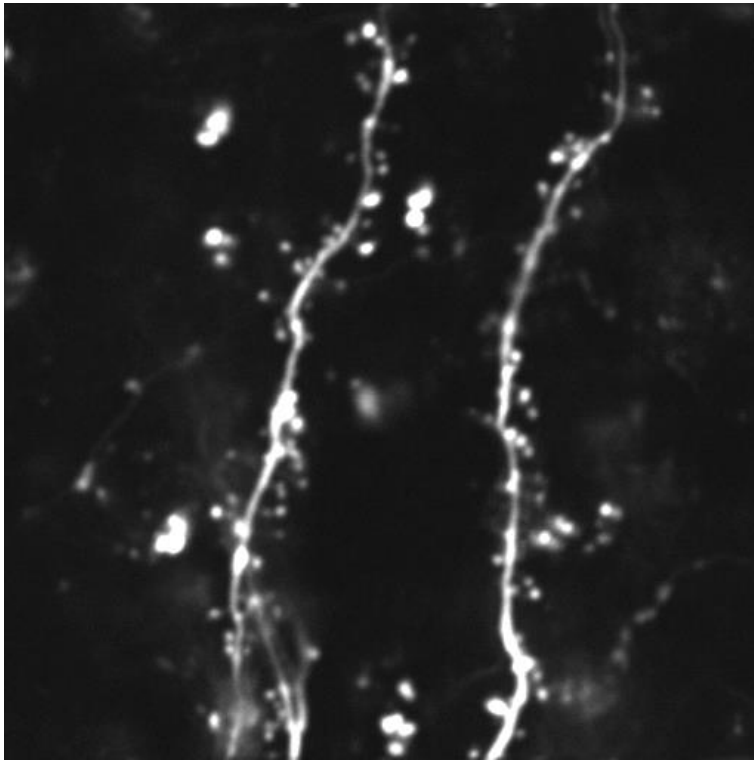
Orientation map



GCaMP6s was sparsely expressed in mouse V1 pyramidal neurons
Dendrites and spines were imaged from layers 2/3 and 5.

Layer 2/3 (150 μm)

Alcor 920nm, HV: 80, power: 4%



Layer 5 (500 μm)

Alcor 920nm, HV: 80, power: 50%

