

Standard HEGOA IR GR and UV specifications: 50 ps

• **Laser characteristics**

| | HEGOA IR60-50P | HEGOA G30-50P | HEGOA UV15-50P |
|--|-----------------------|----------------------|-----------------------|
| Average Power | 60 W @ 1.5MHz | 30 W @ 1.5MHz | 15 W @ 1.5MHz |
| Pulse rate frequency | Single shot to 3 MHz | Single shot to 3 MHz | Single shot to 3 MHz |
| Pulse energy | 40 µJ up to 1.5 MHz | 20 µJ up to 1.5 MHz | 10 µJ up to 1.5 MHz |
| Pulse duration | 50 ps | 50 ps | 50 ps |
| M ² | <1.2 | <1.2 | <1.2 |
| Wavelength | 1030 nm | 515 nm | 343 nm |
| Beam size (diameter at 1/e ²) | TBD | TBD | TBD |
| Beam divergence (half angle) | TBD | TBD | TBD |
| Average Power stability over 8h (RMS 1σ) | 3% | 3% | 3% |
| Polarization | >99% linear | >99% linear | >99% linear |

• **Operating conditions**

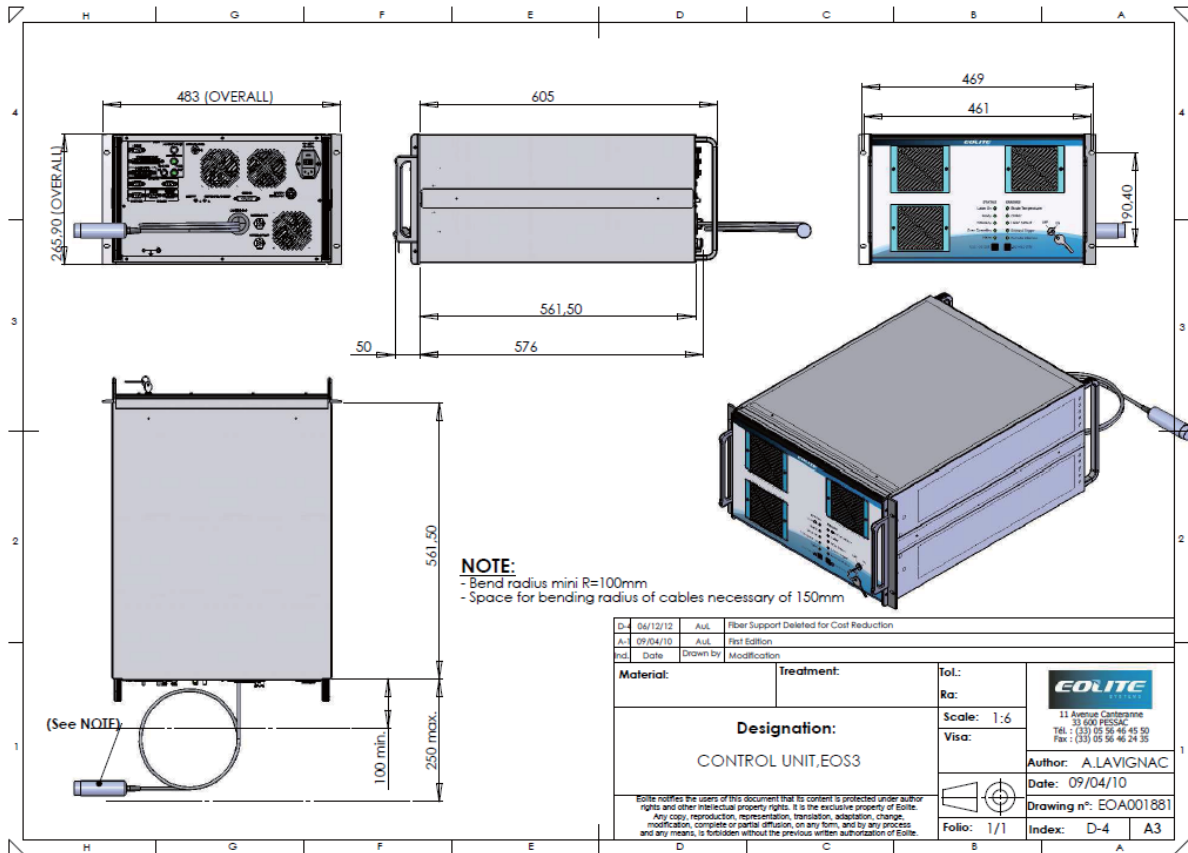
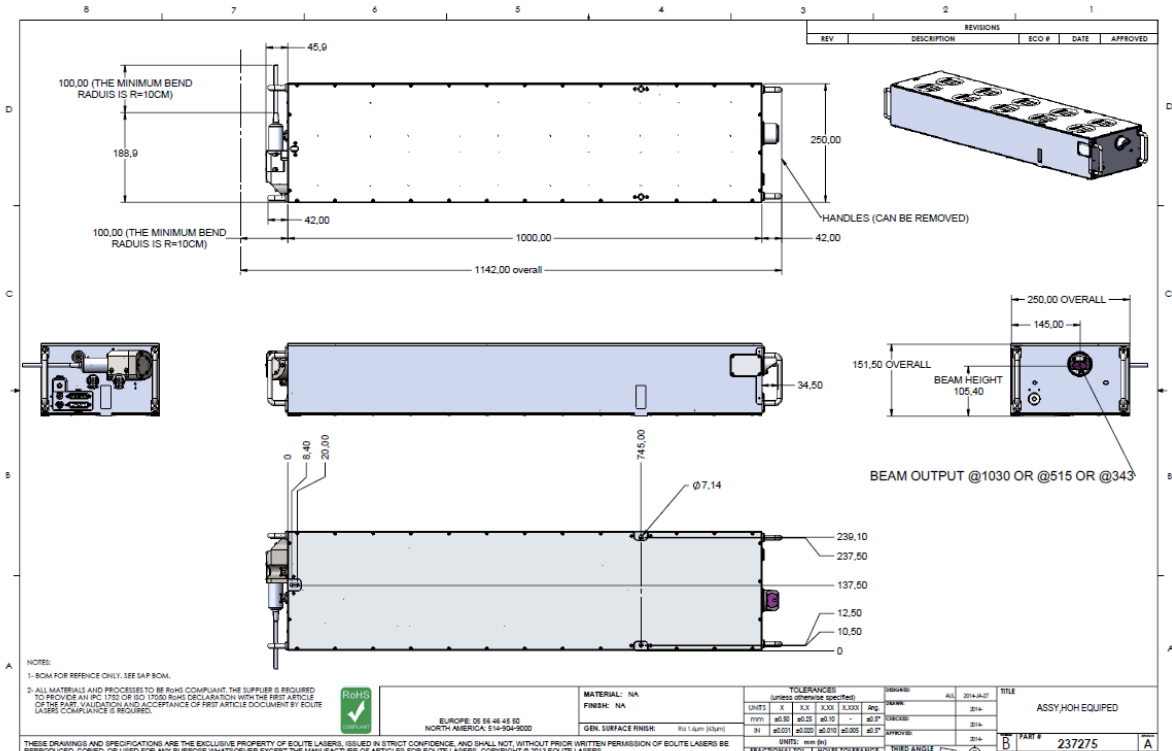
| | |
|-------------|-------------------------|
| Temperature | 15°C – 35°C |
| Humidity | RH < 90° non condensing |

• **General characteristics**

| | |
|---|---|
| Size and weight of the laser head (LH) | 50 kg 1084 x 250 x 150 mm (including cabling and 90° elbow collimator) |
| Size and weight of the power supply(CU) | 35 kg 483 x 265 x 650 mm |
| Supply voltage | 100V/240V |
| Supply frequency | 50/60Hz single phase |
| Max power consumption | Max 1000 W |
| Chiller specifications | Water 3 l/min, between 15°C and 30°C Temperature regulation +/-0,1°C 900 W max. heat load |
| Cable between LH & CU | Length 5 m |

The laser offered should not be used as stand-alone lasers. These lasers have to be used as an OEM component for the integration into a complete system. It is the integrator responsibility to comply with the actual laser safety and electrical regulations.

All laser security guidance according to laser the local regulations need to be deployed by Customer to use the equipment in a proper manner. Precautions to be taken are detailed in the user manual sent in a PDF file included with the laser packing when purchased.



PNEUM Co., Ltd.
5-15-3 Minamikoshigaya, Koshigaya-shi,
Saitama-ken, 343-0845, Japan

TEL: 81-48-985-2720
FAX: 81-48-985-2721
info@pneum.co.jp 1704

EOLITE LASERS
11, Avenue de Canteranne
33600 PESSAC - FRANCE

sales@eolite.com
Tel : +33 5 56 46 45 50
Fax : +33 5 56 46 24 35